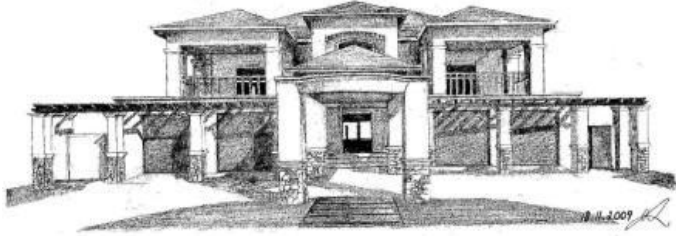


# UDO LÖTTER

## PORTFOLIO LIST OF PROJECTS



### ACKERMANS:

#### Ackermans Stores

Drafting of all Ackermans, Baby Company and Home Comforts Stores ,Nationally and Internationally. New look, expansions, refurbishments, emporiums and mega stores.

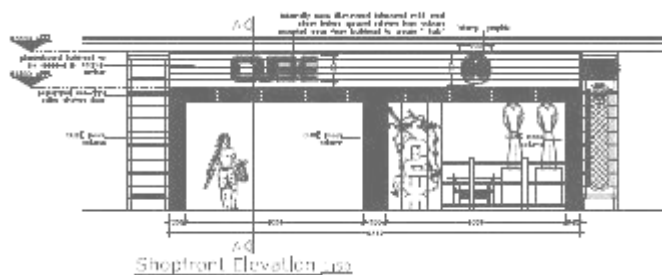
#### Hang Ten Stores

- Maponya Mall (Soweto)
- Loch Logan (Bloemfontein)
- Mountain Mill (Worcester)
- Highveld Mall (Witbank)
- Wernhill (Windhoek)
- Marua Mall (Mosselbay)
- Bright Water Commons (Randburg)
- Bay Side (Table View)
- East Gate (Edenvale)
- East Rand (Boksburg)
- Somerset West (Somerset West)
- Jabulani (Soweto)
- Gateway (Durban)



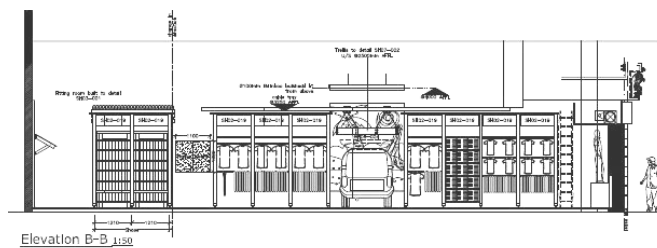
#### Jay Jays Stores

- Canal Walk (Century City)
- Highveld Mall (Witbank)
- Hatfield (Pretoria)
- Tygervalley (Tygervalley)
- Sandton City (Sandton)
- East Gate (Edenvale)
- Maponya Mall (Soweto)
- East Rand Mall (Boksburg)
- Gateway (Durban)



#### Cube Stores

- Canal Walk (Century City)
- Bay Side (Table View)



## **VISSER THOMAS ARCHITECTS**

### **Commercial Sector:**

#### **Great White – Danger Point (Gansbaai)**

A development consisting of Hotel and conference facilities, a separate Spa, Sea villa and Fynbos apartments, single residential houses and clubhouse.



#### **St. Joseph Marist Brothers College (Rondebosch) – Master Plan**

### **Residential Houses:**

**House Bailes (Camps Bay) – Built**

**Stone House (Roemansbaai) – Under Construction**

**Milkwood Cottage (Roemansbaai) – Built**



## **GRAHAM HOLLAND ARCHITECTURAL DESIGN**

### **Residential Estates:**

#### **Stonehurst Mountain Estate (Silvermine – Tokai)**

House Dann Ptn.105 – Council Approved  
House Dann Ptn.116 – Built  
House Dann Ptn.117 – Built

#### **Mount Royal Golf Estate (Malmesbury)**

House Pape Erf.9562 – Built  
Bohan Developers Erf.9683 – Built  
Bohan Developers Erf.9623 - Built  
Bohan Developers Erf.9747 –Council Approved

#### **Sandown Estate (Big Bay)**

M&M Projects Erf.607 – Built  
Lhemrod Construction Erf.592 – Built

#### **Dune Ridge Estate (Big Bay)**

M&M Projects Erf.749 – Built  
House Maltz Erf.766 – Built

#### **Schonenberg Estate (Somerset West)**

Cape Land Developers Erf.18306 – Built  
Cape Land Developers Erf.18307 – Built  
Cape Land Developers Erf.18310 – Council approved

#### **Kelderhof Wine Estate (Stellenbosch)**

House Peterson Erf.366 – Built  
House Levinson Erf.861 – Built

#### **Leopard Rock Estate (Platteklouf)**

House Mittoo Erf.23710 – Built  
House Galiel Erf.24301 – Built

#### **Strawberry Fields Estate (Constantia)**

House Eshragi Erf.12963 – Built  
House Eshragi Erf.13349 – Built  
House Eshragi Erf.13351 – Built

#### **Val de Vie Estate**

House McPherson Erf.566 – Under Construction  
House Lightle Erf. – Under Construction  
House M&M – Erf.202 - Built

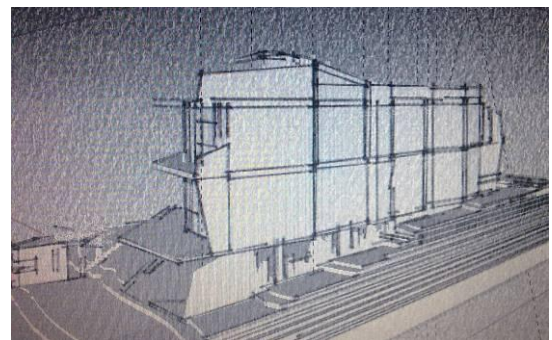
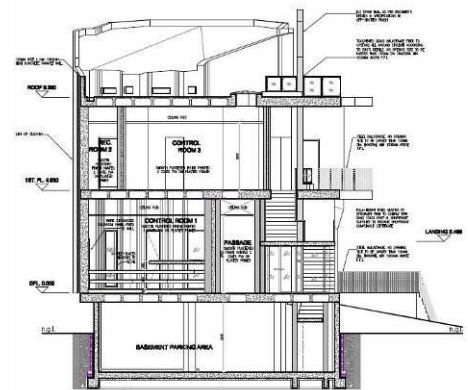


**Residential Houses not in Estates:**

- House Reiter Erf.19578 (Sunset Beach) – Built
- House Eshragi Erf.1591 (Camps Bay) – Built
- House Dos Santos Erf. 76 (Yserfontein) – Built
- House Wightman Erf.902 (Blaauwbergstrand) – Built

**Commercial and GR Sites:**

- Xantha Properties (Blaauwbergstrand) – Retail and apartments
- Dos Santos Erf. 535 (Velddrift) – SDP
- New Age Properties (48 on Sandown & Dartford Drive) – Built
- Selesa Properties (5817 and 5818 Parklands) – Built



**Additions and Alterations:**

- House Coetzee Erf.2352 (Melkbosstrand) – Built
- House Jallett Erf.2383 (Platteklouf) – Built
- Cape Land Developers Erf.5080 (Durbanville) – Built
- House Botes Erf.3699 (Table View) – Built
- Life Changers Church (Table View) – Council Approved

**Private work done in association with Graeme Holland Architects and Architectonics:**

- |  |                            |
|--|----------------------------|
| ESA Music Centre – Currently in Council/ Cons. dwg's to com. | New recording studios      |
| House Taim Erf.548 (Big Bay) – Built                         | New house in Estate        |
| House Hum Coue Erf.3247 (Parklands) – Built                  | New house                  |
| House Everette Erf.84778 (Retreat) – Currently in Council    | 165m <sup>2</sup> addition |
| House Dreyer Erf.105 (Kuilsriver) – Council Approved         | 145m <sup>2</sup> addition |
| House Beattie (Miami Florida) – Design development phase     | New house                  |
| Refurbishments of McDonald's stores in the United Kingdom.   | Retail                     |

I Udo Lötter hereby declare the information contained in this document to be correct.